



# L112 Wireless Light Tag

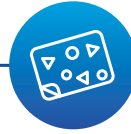
## Features



Easy to use



Light & thin



Direct paste

## Advantages



No Installation



No Fixing

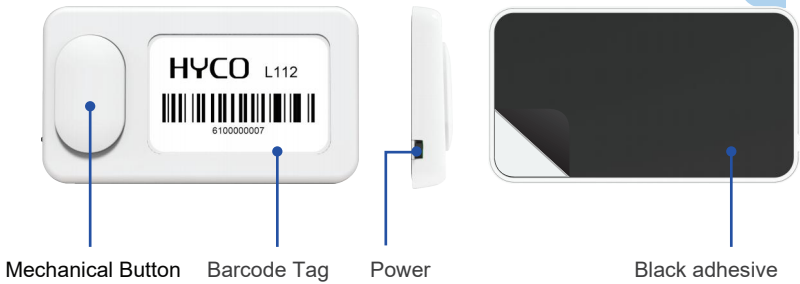


Low Carbon



Low Cost

# Specifications



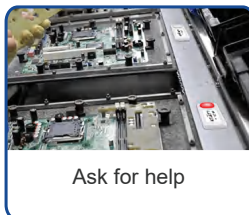
## Save cost and increase efficiency

Model	L112
Weight	40g
Dimensions (W*D*H)	83mm*47mm*8.5mm
LED Indicator	RGB LED (programmable)
Mechanical Button	The inclusion of a mechanical button that responds to both short and long presses enables the device to perform various interactive functions. This feature enhances the system's usability and simplifies its management.
Communication	BT Token
Installation	Stick
Battery (Replaceable)	600mAh@3.7V
Charging Time	2.5 hours
Battery Life	12 months
Operating Temperature	-10°C to 50°C(14°F to 122°F)
Humidity	0%-80%RH (non condensing)

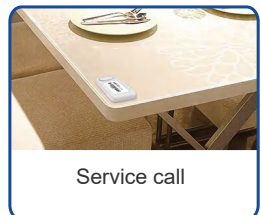
## Applications



Light picking



Ask for help



Service call